

**Communion Practice:** We believe that Christ is truly present in Holy Communion and, as we try to be faithful to Christ in the serving of this Sacrament, we ask that everyone be examined and instructed by the Pastor before receiving Holy Communion. All confirmed members of this parish, who have been regularly examined by the Pastor, are welcome to partake of the Holy Eucharist today. We also welcome the members who are in good standing of any of the parishes served by the Bishop, Pastors, and Deacons of The Evangelical Lutheran Diocese of North America (ELDoNA), and who have spoken to the Pastor prior to the service. Members of other Lutheran parishes or other denominations are kindly asked to refrain from communing today. The Pastor would be glad to make an appointment with anyone to discuss our teachings and/or our parish.

#### **A Prayer upon Entering Church**

Almighty, Ever-Living God, grant that I may gladly hear Thy Word and that all my worship may be acceptable unto Thee; through Jesus Christ, my Lord. Amen.

#### **A Prayer before Communion**

Dear Savior, upon Thy gracious invitation I come to Thine Altar. Let me find favor in Thine eyes that I may approach Thy Table in true faith and receive the Sacrament to the salvation of my soul. Amen.

#### **A Prayer after Communion**

O Thou blessed Savior Jesus Christ, Who hast given Thyself to me in this holy Sacrament, keep me in Thy faith and favor; as Thou livest in me, let me also live in Thee. May Thy holy Body and Blood preserve me in the true faith unto everlasting life. Amen.

#### **A Prayer at the Close of the Service**

Grant, I beseech Thee, Almighty God, that the Word which I have heard this day may through Thy grace be so engrafted in my heart that I may bring forth the fruit of the Spirit; through Jesus Christ, my Lord. Amen.

Scripture quotations are from the Revised Version of the Holy Bible (1895) with Apocrypha. This work is in the Public Domain.



Ash Wednesday  
February 14<sup>th</sup>, 2024

#### **Sts. Peter & Paul Ev. Luth. Church, U.A.C.**

**A Parish Affiliated with the Evangelical Lutheran Diocese of North America**

215 N. Main St., Ste. 1-D  
Simpsonville, SC 29681

(864) 412-6330

[www.spplc.org](http://www.spplc.org)

**Pastor Jerald P Dulas**

(864) 832-9005 (home)

[pastor@spplc.org](mailto:pastor@spplc.org)

**Deacon Floyd P Smithey, Jr.**

(865) 202-9634 (cell)

[deacon@spplc.org](mailto:deacon@spplc.org)

*“For where thy treasure is, there will thy heart be also.” St. Matthew 6:21*

## The Order of Divine Service

### The Ringing of the Bell

*Stand*

**The Processional Hymn** “O Faithful God, We Worship Thee” ASBH 21

**Silent Prayer** (Prayers are located on back cover) ASBH p. 7

**The Invocation** ASBH p. 7

**The Order of the Confessional Service** ASBH p. 227-230

**The Versicle** (All may kneel) ASBH p. 227

**Psalm 42** (Chanted Responsively) ASBH p. 227-228

**The Exhortation** ASBH p. 228-229

**The Confession** ASBH p. 230

**The Absolution** (All proceed to the altar) ASBH p. 230

*Stand (if kneeling)*

**The Introit** (Congregation joins Pastor on Gloria Patri) ASBH p. 66

**The Kyrie** ASBH p. 10

**The Salutation** ASBH p. 13

**The Collect for the Day** ASBH p. 66

**Collect Amen** ASBH p. 14

*Sit*

**The Epistle** Joel 2:12-19

**The Gradual** ASBH p. 66

**The Sentence for the Season of Lent** ASBH p. 41

*Stand*

**The Gospel** St. Matthew 6:16-21

**The Creed** (All may bow at the words “And was made man.”) INSERT

*Sit*

**The Hymn** “When O’er My Sins I Sorrow” ASBH 19

**The Sermon** Be Not as the Hypocrites

*Stand*

**The Offertory** ASBH p. 18-19

(An Alms Basin is located next to the bulletins for any Offerings)

**The General Prayer** ASBH p. 19-20

**The Lord’s Prayer** ASBH p. 20

*Sit*

**The Hymn** “From Depths of Woe I Cry to Thee” ASBH 60

*Stand*

**The Lavabo** ASBH p. 21

**Silent Prayer** (Prayers are located on back cover) ASBH p. 21

**The Preface** ASBH p. 22

**The Proper Preface** ASBH p. 23-27

**The Sanctus and Benedictus** ASBH p. 27-28

**The Lord’s Prayer** ASBH p. 29

**The Verba Domini** (All may bow when the Pastor genuflects) ASBH p. 30

**The Pax Domini** (All may bow and cross themselves) ASBH p. 31

**The Agnus Dei** (All may kneel) ASBH p. 31-32

*Sit*

**The Distribution** (Prayers are located on back cover)

**The Hymn** “I Come, O Savior, to Thy Table” TLH 315

*Stand*

**The Nunc Dimittis** ASBH p. 33-35

**The Thanksgiving and Collect** ASBH p. 35-36

**The Hymn** “Thee Lord, Our God, We Praise” ASBH 56

**The Salutation** ASBH p. 36

**The Benedicamus** ASBH p. 37

**The Benediction** ASBH p. 37

**The Triple Amen** (Second Setting) ASBH p. 38

**The Recessional Hymn** “Isaiah, Mighty Seer, in Days of Old” TLH 249

*Sit*

### Recitation of the Catechism

The Sacrament of the Altar, (pages 25-26) & Questions 248-253 (Part III, The Lord’s Prayer. The Fifth Petition, pages 118-120).

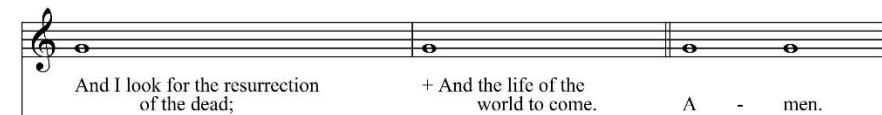
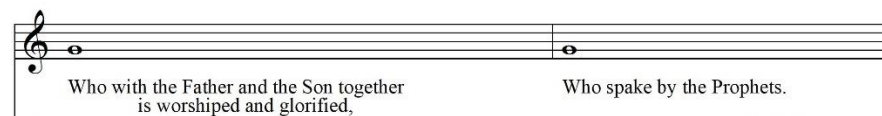
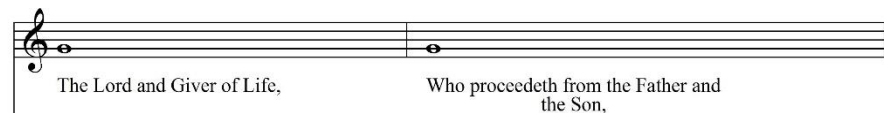
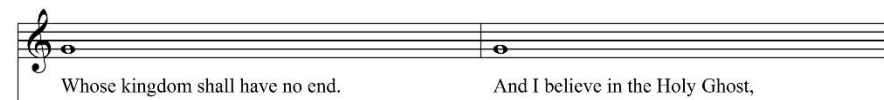
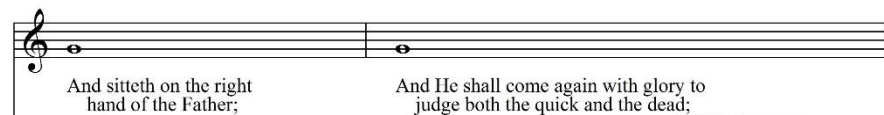
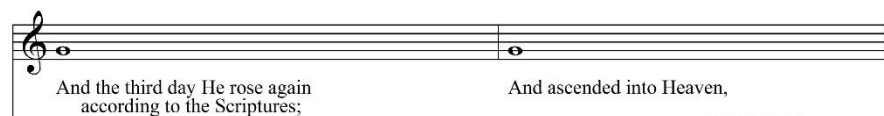
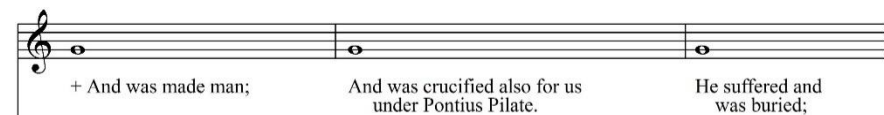
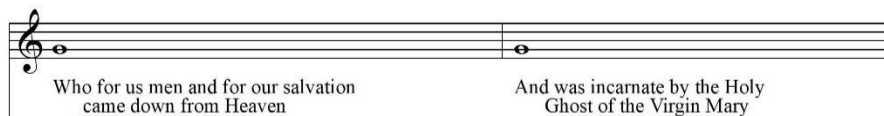
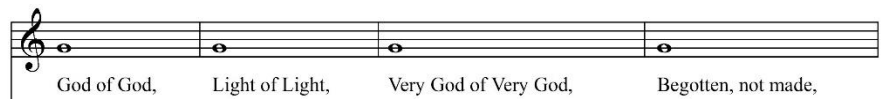
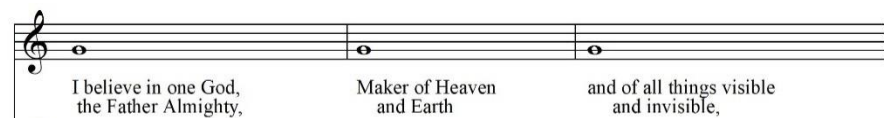
### Announcements

ASBH = Augustana Service Book and Hymnal: 2022 Supplement.

TLH = The Lutheran Hymnal

Δ—Indicates a hymn ending in a Doxological stanza; please stand.

# The Nicene Creed



+ — indicates that the worshippers may make a sign of reverence (bow the head, genuflect, or make the sign of the holy cross) as is appropriate.